



# **CCC VMware Workstation Installation Guide**

Document Version 1.0- 02.00.1 build 016

**Table of Content**

Typographic Convention ..... 3  
Preface..... 4  
    System Requirements ..... 4  
    Installation Procedure..... 4  
        CCC Virtual Machine Activation ..... 7  
        Virtual CCC Basic Configuration ..... 8  
        Other Configurations ..... 10

## Typographic Convention

All contents in this guide including text or screenshots follow the given list of conventions.

Item	Convention	Example
Topic titles	Shaded font typefaces	Preface
Subtitles	Bold & Black typefaces	Notation conventions
Notes & Recommendations	Bold typeface between the black borders	<b>Note</b>

## Preface

Welcome to CCC VMware Workstation Installation and Deployment Guide. This guide describes how to download, deploy and run Cyberoam Central Console as a virtual machine on VMware Workstation platform.

## System Requirements

The hardware requirement for installing CCC VMware workstation is dependent on number of appliance(s) to be managed by CCC VMware workstation. Following table outlines the important hardware components and their recommended availability.

Model	Appliances Supported	RAM	Hard Disk Drive	Browser
CCC VMW 15	15	2 GB free space (Minimum)	SATA or SCSI hard disk with minimum 80 GB free disk space	Microsoft Internet Explorer 7.0+
CCC VMW 50	50	4 GB free space (Minimum)	SATA or SCSI hard disk with minimum 160 GB free disk space	Mozilla Firefox 3.0+ Google Chrome
CCC VMW 100	100	4 GB free space (Minimum)	SATA or SCSI hard disk with minimum 250 GB free disk space	Best view - Mozilla Firefox 3.0+
CCC VMW 200	200	4 GB free space (Minimum)	SATA or SCSI hard disk with minimum 320 GB free disk space	

## Installation Procedure

### Pre-requisite

Make sure that VMware Player and OVF Tool are already installed in your network. Please refer to <http://www.vmware.com/> for details.

Installation procedure covers:

- [CCC VMware Workstation Installation](#)
- [CCC VMware Workstation Management](#)

### CCC VMware Workstation Installation

#### 1. Download OVA file

Download .ova file of Cyberoam Central Console OVF image from following link and store it in your machine.

<http://download.cyberoam.com/virtualccc>

#### 2. Convert OVA file to Virtual Machine

Execute the following command on Command Prompt (for Windows) or Terminal (for Linux) to convert the.ova file (**Step 1**) into virtual machine.

```
"<Path of OVF Converter (ovftool)>" "<Complete path of downloaded ova file>" "<Complete path to extract Virtual Machine (Directory Name)>"
```

```
C:\Program Files\VMware\VMware OVF Tool>ovftool.exe "D:\CCC-Release\CCCUMW_OVAPackage\CCCUMW.02_00_1016\CCCUMW.02_00_1016.ova" "D:\CCC UMW\"_
```

**Screen – Generate .vmx File**

The generated .vmx file contains primary configuration of CCC Virtual machine and can be opened using VMware player.

```
C:\Program Files\VMware\VMware OVF Tool>ovftool.exe "D:\CCC-Release\CCCUMW_OVAPackage\CCCUMW.02_00_1016\CCCUMW.02_00_1016.ova" "D:\CCC UMW"
Opening OVA source: D:\CCC-Release\CCCUMW_OVAPackage\CCCUMW.02_00_1016\CCCUMW.02_00_1016.ova
The manifest validates
Opening VMX target: D:\CCC UMW
Writing VMX file: D:\CCC UMW\CCCUMW.02_00_1016\CCCUMW.02_00_1016.vmx
Disk progress: 6
```

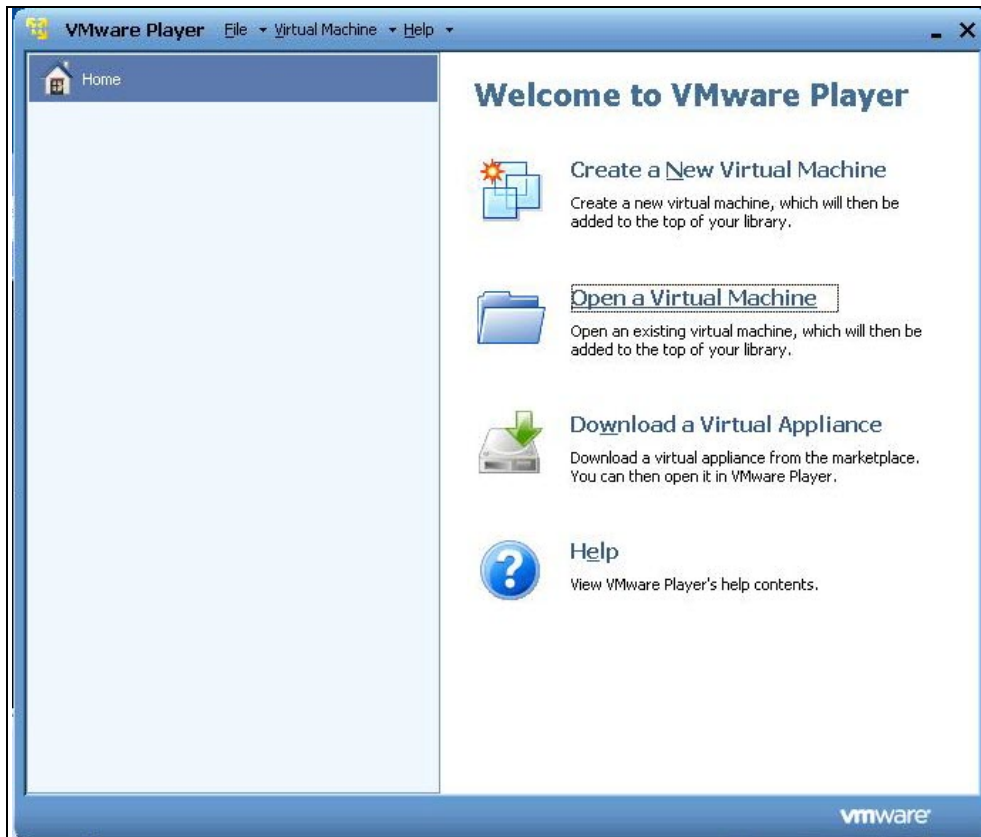
**Screen – Generate .vmx File**

```
C:\Program Files\VMware\VMware OVF Tool>ovftool.exe "D:\CCC-Release\CCCUMW_OVAPackage\CCCUMW.02_00_1016\CCCUMW.02_00_1016.ova" "D:\CCC UMW"
Opening OVA source: D:\CCC-Release\CCCUMW_OVAPackage\CCCUMW.02_00_1016\CCCUMW.02_00_1016.ova
The manifest validates
Opening VMX target: D:\CCC UMW
Writing VMX file: D:\CCC UMW\CCCUMW.02_00_1016\CCCUMW.02_00_1016.vmx
Disk Transfer Completed

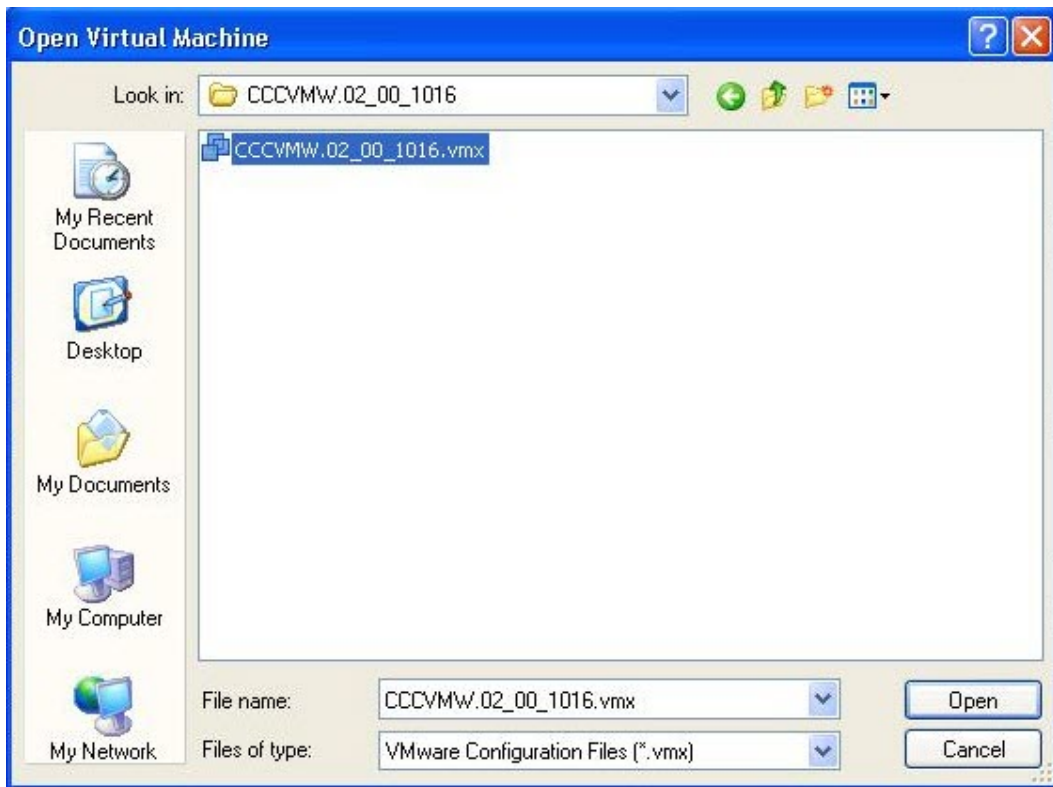
Completed successfully
C:\Program Files\VMware\VMware OVF Tool>_
```

**Screen – Successfully Generated .vmx File**

3. Open CCC Virtual Machine  
Start VMware Player and open the generated .vmx file in VMware player.

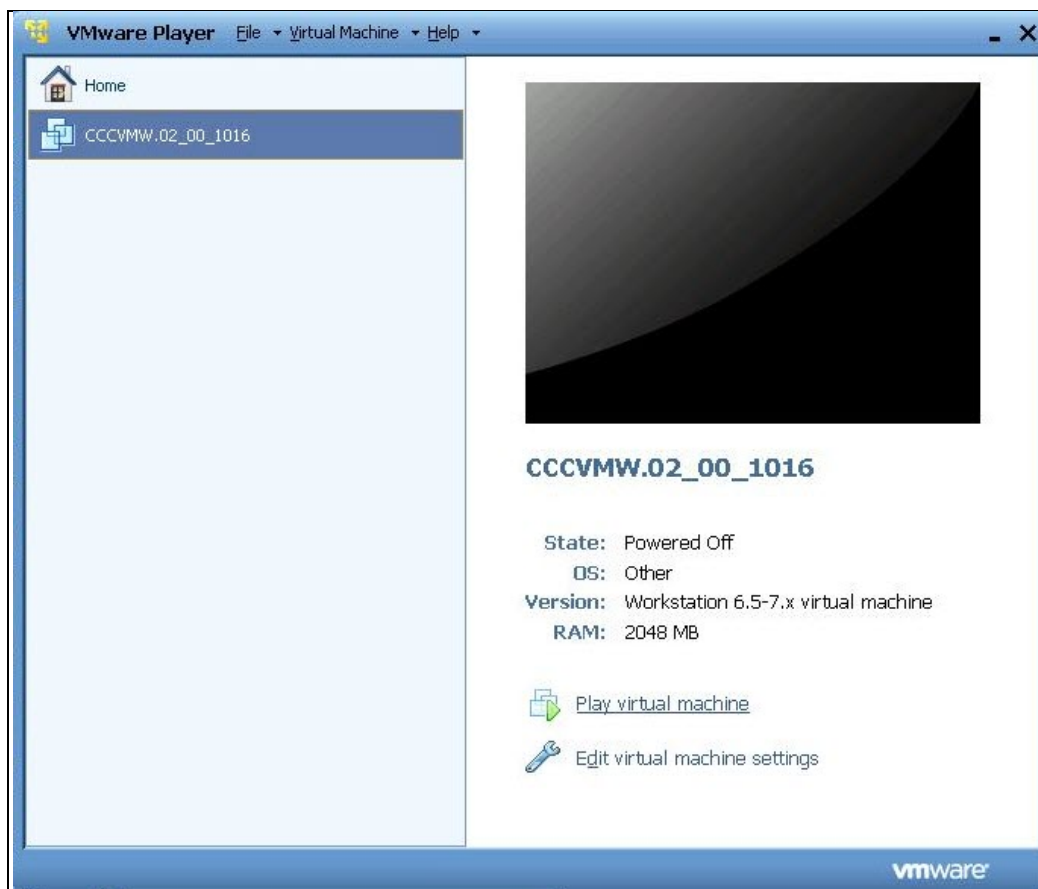


**Screen – Open .vmx file**



**Screen – Open CCC Virtual Machine**

Select the CCC Virtual machine and click 'Play virtual machine' link to start CCC virtual machine.



**Screen – Open CCC Virtual Machine**

## CCC Virtual Machine Management

Management of CCC Virtual machine includes

- [CCC Virtual Machine Activation](#)
- [Virtual CCC Basic Configuration](#)
- [Other Configurations](#)

## CCC Virtual Machine Activation

### Pre-requisite

Please make sure that <http://cyberoamupdate.elitecore.com/> is accessible from deployed CCC virtual machine

1. You need to activate the Virtual CCC in order to start managing it.  
Given below is the default network schema for your CCC Virtual machine.
  - Port A: 172.16.16.16/255.255.255.0
  - Port B: 192.168.2.1/255.255.240.0
  - Default Gateway: 192.168.1.254

If your organization's network schema differs from default network configuration, please update it using '1. Network Configuration' option available in CCC Virtual machine CLI Console.

```

Main Menu

AA. Appliance Activation
  1. Network Configuration
  2. CCC System Configuration
  3. CCC Management
  4. CCC Console
  5. Shutdown / Reboot
  0. Exit

Select Menu Number [0-5]:1
    
```

**Screen – Network Configuration**

Network Configuration option allows you to view and change network settings. Use this option to change IP address of available ports.

For further details, please refer to [CCC Console guide](#).

2. To activate the CCC Virtual machine, select 'AA. Appliance Activation' option and provide appliance activation key.

```

Main Menu

AA.  Appliance Activation
    1.  Network Configuration
    2.  CCC System Configuration
    3.  CCC Management
    4.  CCC Console
    5.  Shutdown / Reboot
    0.  Exit

Select Menu Number [0-5]: AA
Enter Appliance Key : _
    
```

Screen – CCC Virtual Machine Activation

```

Main Menu

AA.  Appliance Activation
    1.  Network Configuration
    2.  CCC System Configuration
    3.  CCC Management
    4.  CCC Console
    5.  Shutdown / Reboot
    0.  Exit

Select Menu Number [0-5]: AA
Enter Appliance Key : C093000261-RXXRXXRX

Appliance Activation in process.....Activation done...
Press Enter to continue .....
    
```

Screen – Successful Activation of CCC Virtual Machine

- After successful activation of CCC Virtual machine, browse to default (<http://172.16.16.16>) or the configured IP address to access Web Admin Console of Virtual CCC. Use following default credentials to access and manage Virtual CCC from Web.
  - Username: admin
  - Password: admin

**Virtual CCC Basic Configuration**

- Once you login to CCC Web admin console you can change interface(s) IP address from **Management Console → CCC Management → Network → Interface**.

Interface	DNS	Gateway	Unicast Route
Add Alias Delete			
Interface Name	IP/Netmask	MTU	Interface Speed
PortA	10.103.7.1/255.255.254.0	1500	Auto-negotiated
PortB	172.16.16.1/255.255.240.0	1500	Auto-negotiated
PortC	10.10.2.1/255.255.255.0	1500	Auto-negotiated
PortD	10.10.3.1/255.255.255.0	1500	Auto-negotiated
PortE	10.10.4.1/255.255.255.0	1500	Auto-negotiated
PortF	10.10.5.1/255.255.255.0	1500	Auto-negotiated
Add Alias Delete			

Screen – Change Interface IP Address



Change default gateway IP address from **Management Console** → **CCC Management** → **Network** → **Gateway**.

Interface	DNS	Gateway	Unicast Route
		Gateway Name	Gateway IP Address
		Ethernet Port	Status
		Default Gateway	10.103.6.1
		PortA	●

Screen – Change Gateway IP Address

2. Configure DNS from **Management Console** → **CCC Management** → **Network** → **DNS**.

Interface
DNS
Gateway
Unicast Route

**DNS List**

10.103.6.1  
 127.0.0.1

List order indicates preference

Screen – Configure DNS

3. Set time zone and current date from **Management Console** → **CCC Management** → **System** → **Time**

CCC Certificate Settings Notification **Time** CCC Appliance Access

Current Time **2011-05-25 14:06:02**

Time Zone Asia/Kolkata

Set Date & Time

Date 05/25/2011

Time 14 HH 06 MM 02 SS

Sync with NTP Server

Use pre-defined

Use Custom

(Enter NTP Server IP Address/Domain)

	<b>Add</b>
No Record	

Sync Status **Synchronize Now**

**Apply**

Screen – Time Settings

### Congratulations!!!

This finishes the basic configuration of Virtual CCC and you are now ready to use the Virtual machine.

### Other Configurations

1. Create Customer Account and register Virtual CCC

Browse to <http://customer.cyberoam.com> and click Register and follow the on-screen steps. It will create your customer account as well as register your Virtual CCC.

2. Configure Cyberoam to communicate with Virtual CCC

- Enable management of the Cyberoam appliance by Virtual CCC from **System** → **Administration** → **Central Console** and enter IP address of CCC appliance.
- Select heartbeat protocol to communicate with Virtual CCC.

Make sure, Virtual CCC can receive heartbeat information on port 514 for Syslog and port 80 for HTTP.

Screen – Configure CCC in Cyberoam

3. Access Virtual CCC Web Admin Console

Browse to <https://<IP address of Virtual CCC>> and log on using the default username (admin) and password (admin).

Note: Internet Explorer 7+ or Mozilla Firefox 3.0+ is required to access the CCC Web Admin Console.

4. Configure Virtual CCC to add and manage Cyberoam

Add Cyberoam appliance to CCC from **Management Console → Appliance Management → Appliance(s)**.

Screen – Add Appliance(s)

- Specify Appliance Name to identify added Cyberoam appliance .
- Specify Appliance Key.
- Specify routable IP Address of the Cyberoam appliance.
- Specify Administrator Username and Password of the Cyberoam appliance.
- Select Access Protocol and Port to communicate with Cyberoam appliance. Make sure to allow HTTP/HTTPS traffic on Cyberoam for Virtual CCC.
- Select CCC administrator user who can access and manage the appliance. Only the selected administrator will be allowed.
- Specify additional details for the administrator user e.g. name, email id and contact address.

5. Access Help

For accessing online help, click the Help button or F1 key on any of the screens to access the corresponding topic's help. Use the Contents and Index options to navigate through the entire online help

**Additional Resources**

Visit following links for more information on Cyberoam Central Console
Technical Documentation – <a href="http://docs.cyberoam.com">http://docs.cyberoam.com</a>
Cyberoam Knowledge Base – <a href="http://kb.cyberoam.com">http://kb.cyberoam.com</a>
Cyberoam Security Center – <a href="http://csc.cyberoam.com">http://csc.cyberoam.com</a>
Cyberoam Upgrades – <a href="http://download.cyberoam.com">http://download.cyberoam.com</a>